

# PERFORMANCE SERIES



A Platform with Endless Opportunities

**MA** MARK ANDY

# PERFORMANCE SERIES

## Engineered Precision. Ergonomic. Endless Configurations.

As an extension of the award-winning Performance Series platform, the new suite of Mark Andy flexographic equipment offers the performance you want and everything you need.

Designed to drive converter profitability in a highly competitive landscape, the Performance Series redefines workflow productivity through its simple design, tangible waste savings, streamlined automation and fast changeovers, making it the **most productive** press in its class.

### More than Intuitive: Ease of Use

With ultra-efficient operation in mind, the Performance Series provides the industry's clearest path to automating workflows through **operator-focused** intuitive engineering.

- Fully-automated setup with job save, pre-registration and re-registration
- Intuitive operator interface and membrane controls at each station
- Servo impression control
- Automatic load-and-lock inking system — combines several steps in one quick motion
- Quick change print station setup and changeover - sets up in less than 30 seconds
- Open access design — no obstructive covers or guards
- Fewer operator adjustments



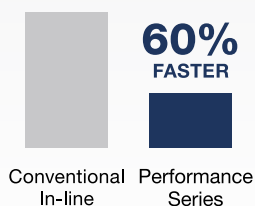
### Increasing Converter Profitability through Maximized Press Efficiencies

A **2-for-1 replacement** over conventional flexo, the Performance Series is proven to deliver a more consistent quality and faster turnaround than its competitors. With less substrate waste and under 2 minute ink, plate, die changeover, ultimate pressroom efficiency is more than possible - it's the Performance Series standard.

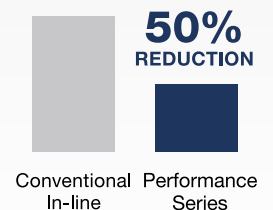
- Exceptional, repeatable print precision through consistent and independently-controlled inking and material impression
- Common web paths - reduced need to re-web press
- Auto registration system maintains registration accuracy through run, including speed changes
- Low volume inking system provides minimized ink waste



#### Changeover Time

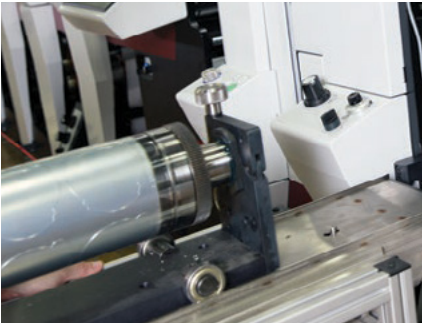


#### Material Waste



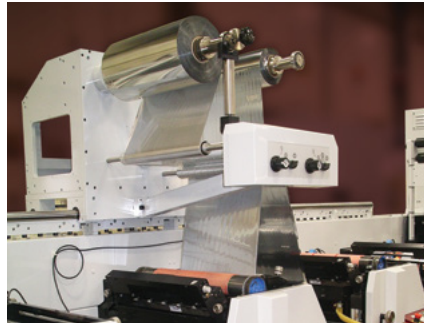
## Optimizing Your Performance Series

The Performance Series platform is engineered to **drive profitability** and respond to the changes in your product portfolio both now and into the future. Mark Andy's dedicated team of engineers is available to help **future-proof your machine**.

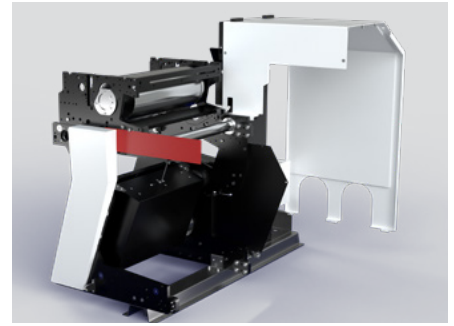


### QCDC & QCDC-SR -

This technology removes the bottleneck of long die changeovers and slower matrix stripping speeds. Available to all Performance Series models.



**Inline Rail System** - Expand the variety of applications and industries that your Performance Series press can efficiently serve with easy movement of advanced decorating options.

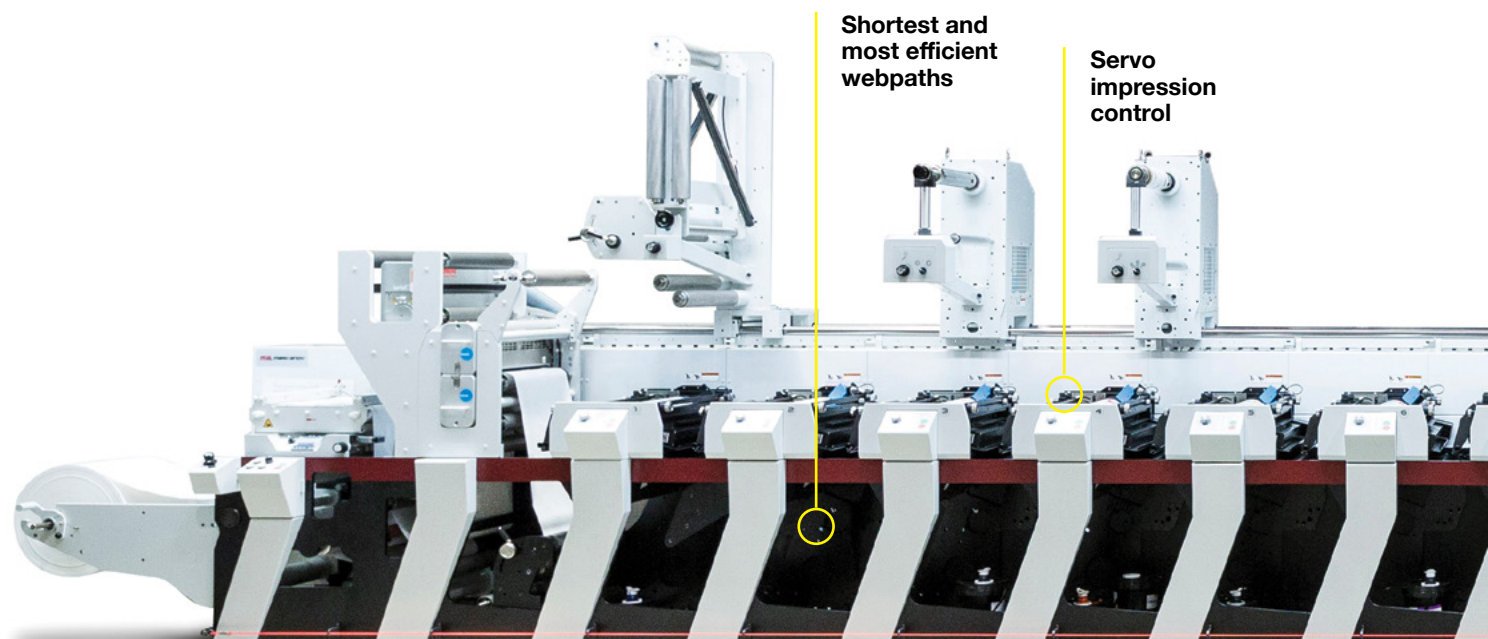


### Modular Recirculation Dryers -

Allows for 50% lower power consumption through recirculating heated air while providing consistent performance regardless of width or number of stations. Available to all Performance Series E models.



**Inline Lamination** - Available in UV, water-based, solvent-based and solventless, the lamination options for Performance Series covers the widest range of converter needs.

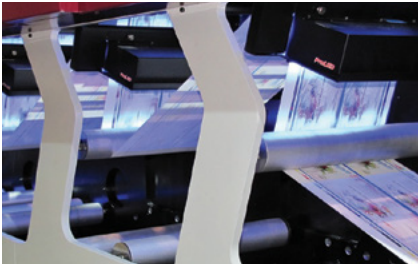


**Shortest and most efficient webpaths**

**Servo impression control**

## Lean & Efficient Web Paths

Shorter web paths mean less material in press and less material wasted

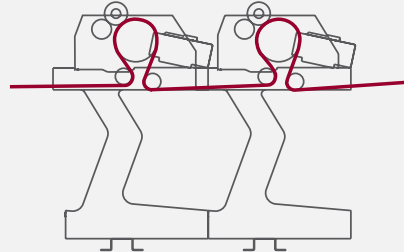


**ProLED** - ProLED delivers a more efficient, flexible, productive and green curing solution over traditional curing. Available to all Performance Series models.



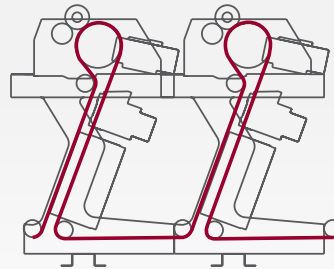
**Digital Plus Screen** - A digital inkjet replacement for rotary screen, Performance Series users can achieve screen-like print all while avoiding costly setup and ancillary expenses.

### ProLED with Chilled Impression Roll



Shortest web path —  
53 inch (135 cm) between print heads.

### Hot Air & ProLED Combination

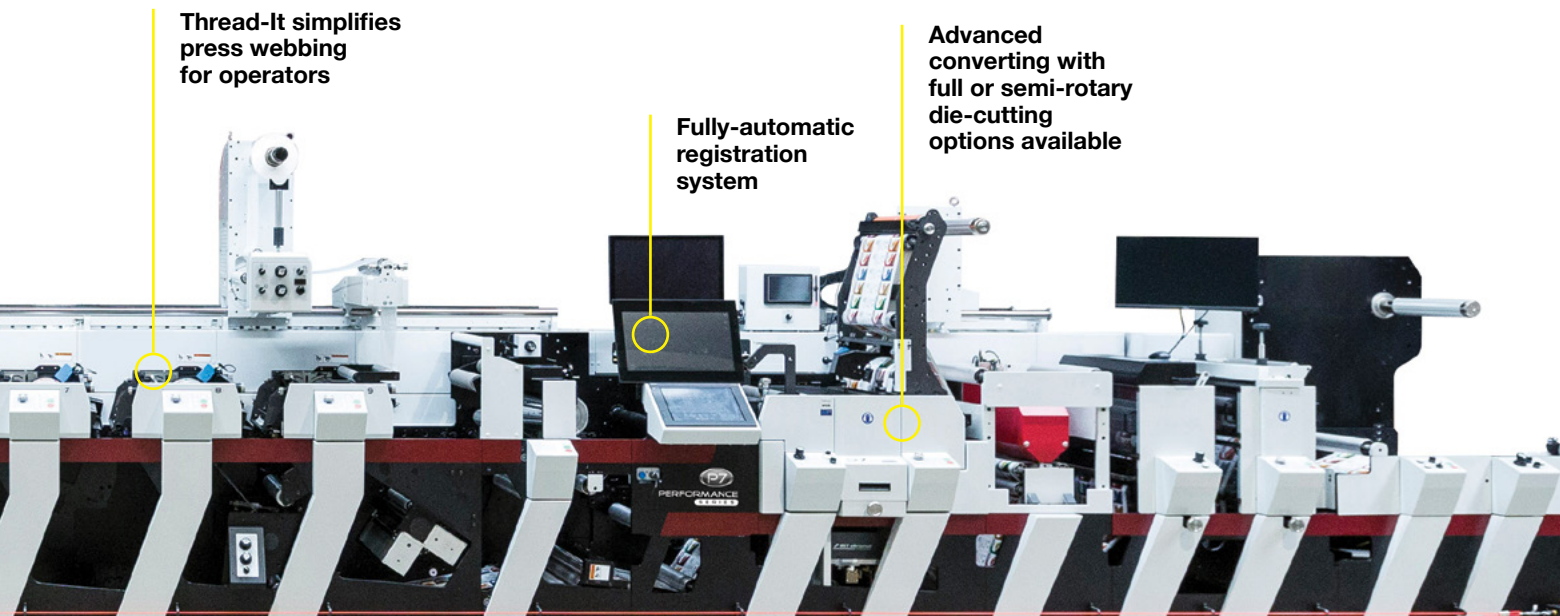


Efficient web path for maximizing both hot air and UV chilled or non-chill applications. No re-webbing needed.

**Thread-It** simplifies press webbing for operators

**Fully-automatic registration system**

**Advanced converting with full or semi-rotary die-cutting options available**





## Technical Specifications

Option/Features	P7	P9
<b>Metric measurements</b>		
10 inch (250mm) Width	✓	
13 inch (330mm) Width	✓	✓
17 inch (430mm) Width	✓	✓
20 inch (508mm) Width	✓	
22 inch (558mm) Width	✓	✓
26 inch (660mm) Width		✓
Independent Anilox Drive		✓
Servo Impression Control		✓
Ink Pans (up to 20 inches/508mm)	✓	✓
Converting (up to 22 inches/558mm)	✓	✓
<b>Max Speed</b>		
750 fpm (230 mpm)		
1000 fpm (305 mpm)	✓	✓
<b>Substrate Range</b>		
.5 mil - 14 pt (12 - 356 micron)		
.5 mil - 18 pt (12 - 450 micron)	✓	✓
<b>Die Repeat up to 26 inch max</b>	✓	✓
<b>Print Repeat 5.5 in - 24 in</b>	✓	✓
<b>Unwind and Rewind Capacity 40 inch (1016mm)</b>	✓	✓

*"We replaced two to three pieces of legacy equipment with each Performance Series press. The investment in transferring these jobs over wasn't a choice made lightly, but doing it gave an immediate benefit of efficiency and production."*

**- Jan Greis, US Tape and Label**



**PERFORMANCE**  
**SERIES**

## Application Range



**BOTTLE WRAPS**



**LIDDING**



**FILM**  
(SUPPORTED & UNSUPPORTED)



**LIGHT CARTON**



**PRIME LABELS**



**ROLL-FED LABELS & WRAPS**



**TAGS & TICKETS**



**FLEXIBLE PACKAGING**



**SHRINK SLEEVES**



**DURABLE INDUSTRIAL**



**EXTENDED CONTENT LABELS**



**IN-MOLD LABELS**



With a mission to serve as your Total Solutions Partner, our global team is committed to delivering high quality, innovative solutions and support to help you drive profitability. Mark Andy responds to business needs by offering a broad range of equipment, education, support and supplies to printers and converters around the world.

Partnering with Mark Andy means access to leading global brands with Mark Andy narrow and mid-web

printing presses, Rotoflex finishing solutions, and a complete line of Mark Andy Print Products consumables and pressroom supplies. All Mark Andy products are supported by the largest customer service team in the industry, committed to delivering spare parts, technical service, PM programs, retrofits and rebuilds, as well as dedicated hands-on training through Mark Andy University.

For your local representative go to [markandy.com/dealerlocator](http://markandy.com/dealerlocator)

**Global Headquarters**  
18081 Chesterfield Airport Road  
Chesterfield, MO USA 63005

Tel +1 636 532 4433  
Fax +1 636 532 1510  
Email [info@markandy.com](mailto:info@markandy.com)

**PERFORMANCE**  
**SERIES**

**MA MARK ANDY**  
[markandy.com](http://markandy.com)